

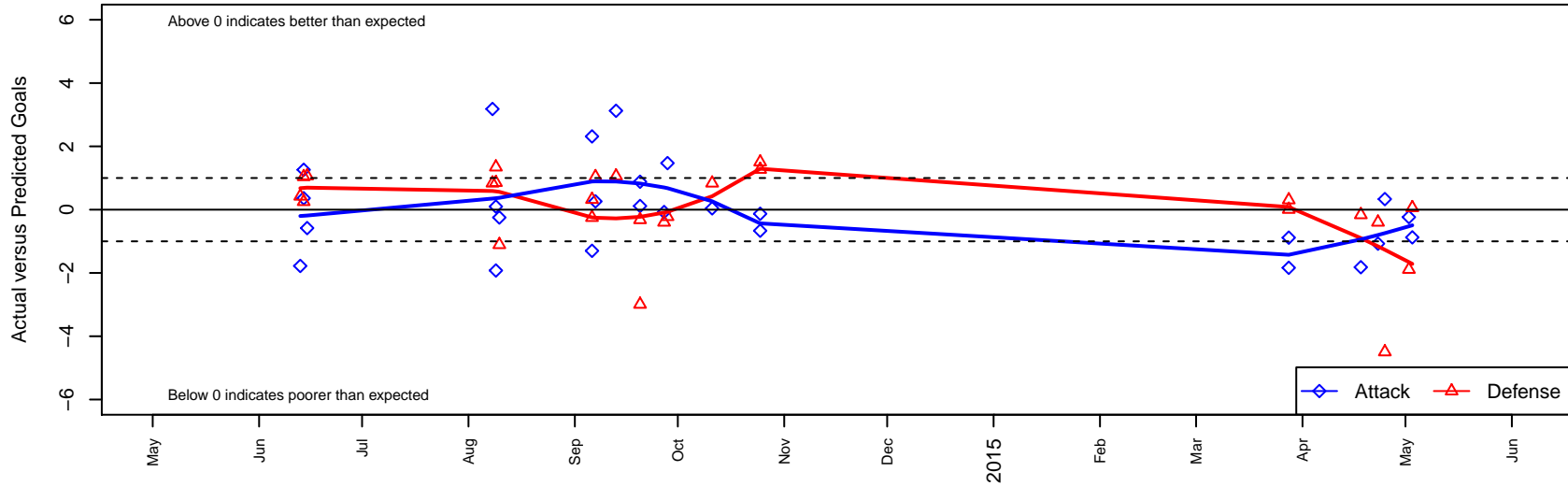
SSC Shadow United Benjamin G01

Spokane SC Shadow
 Spokane, WA
 G01 total strength=782
 attack=1.02 defense=0.87
 fall league = NWL U14
 spr league = Spr NWL U13/U14 BRACKET A L

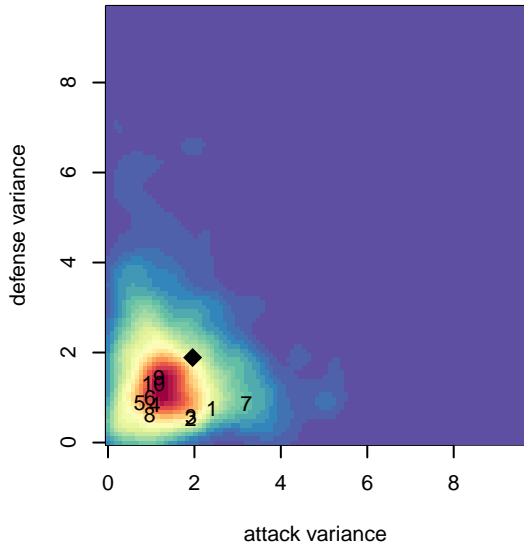
alt names used:
 SSC Shadow United Benjamin G01
 SSC SHADOW UNITED G01-BENJAMIN

Venues played:
 2014 Olivia Chaffin GU13
 2014 Les Schwab NW Cup U13 Gold / Silver U
 2014 Pend Oreille Cup GU13 Gold
 2014 NWL U14
 2014 Spr NWL U13/U14 BRACKET A U14

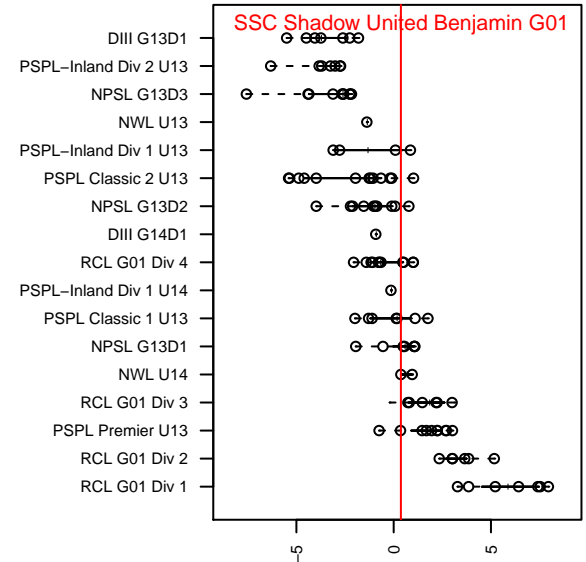
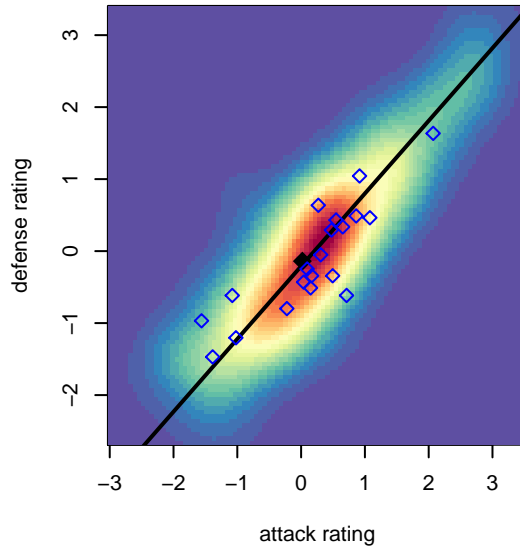
SSC Shadow United Benjamin G01
 Dots are actual minus expected GF (blue circles) and GA (red triangles).
 Blue line is smoothed change in attack strength. Red is smoothed change in defense strength.



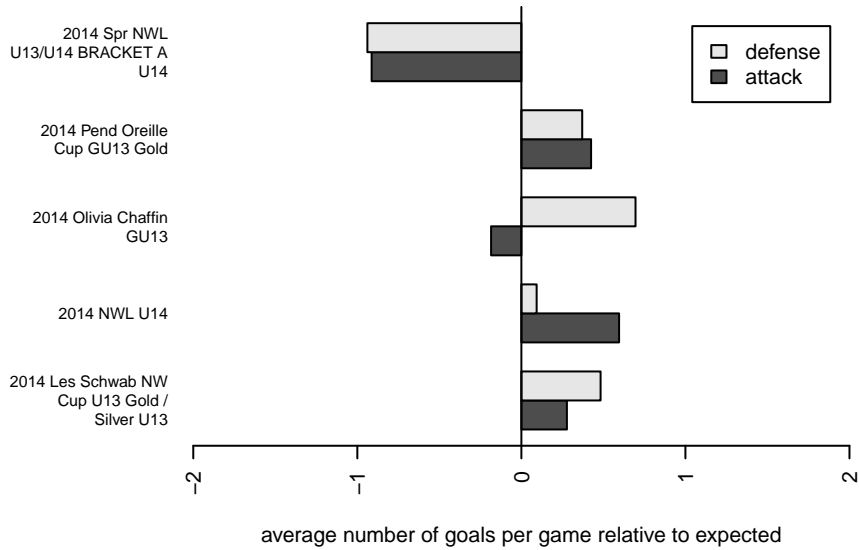
**attack and defense variance (black dot)
relative to other teams
and top 10 in region**



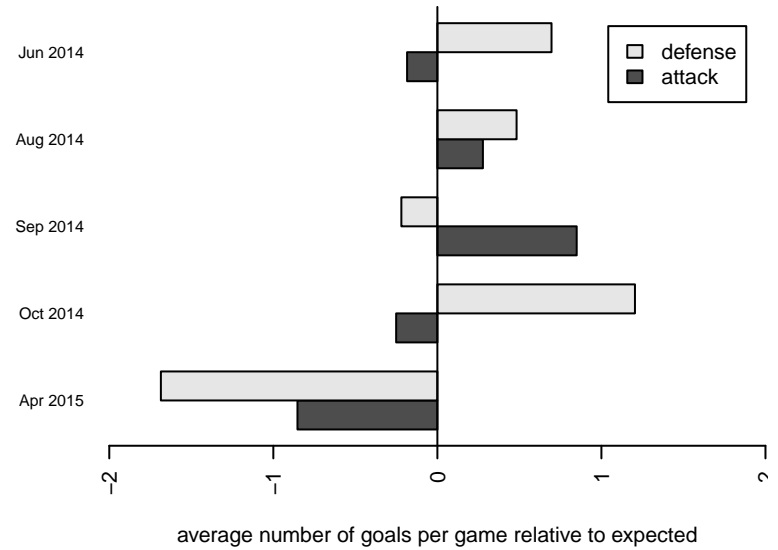
**attack and defense rating
relative to others at age
and all opponents in last 13 months**



Performance relative to 13 month average



Performance relative to 13 month average



| date | home | | away | | venue | pred.home | pred.away |
|------------|------------------------------------|---|------------------------------------|---|------------------------------------------|-----------|-----------|
| 2015-05-03 | CDA Sting Tigres G00 | 1 | SSC Shadow United Benjamin G01 | 1 | 2014 Spr NWL U13/U14 BRACKET A U14 | 1.06 | 1.87 |
| 2015-05-02 | Sandpoint Strikers G01 | 3 | SSC Shadow United Benjamin G01 | 1 | 2014 Spr NWL U13/U14 BRACKET A U14 | 1.11 | 1.24 |
| 2015-04-25 | Sandpoint Strikers G00 | 7 | SSC Shadow United Benjamin G01 | 1 | 2014 Spr NWL U13/U14 BRACKET A U14 | 2.50 | 0.67 |
| 2015-04-23 | SSC Shadow United Benjamin G01 | 0 | SSC Shadow Elite Bellefeuille G01 | 2 | 2014 Spr NWL U13/U14 BRACKET A U14 | 1.07 | 1.60 |
| 2015-04-18 | SSC Shadow United Benjamin G01 | 1 | Three Rivers SC Black District G01 | 1 | 2014 Spr NWL U13/U14 BRACKET A U14 | 2.82 | 0.84 |
| 2015-03-28 | Idaho Thunder G00 | 2 | SSC Shadow United Benjamin G01 | 0 | 2014 Spr NWL U13/U14 BRACKET A U14 | 2.01 | 0.88 |
| 2015-03-28 | SSC Shadow United Benjamin G01 | 2 | Moscow United G01 | 0 | 2014 Spr NWL U13/U14 BRACKET A U14 | 3.84 | 0.31 |
| 2014-10-25 | SSC Shadow United Benjamin G01 | 0 | Sandpoint Strikers G00 | 1 | 2014 NWL U14 | 0.67 | 2.50 |
| 2014-10-25 | SSC Shadow United Benjamin G01 | 1 | Valley YSA Wohl G00 | 0 | 2014 NWL U14 | 1.13 | 1.27 |
| 2014-10-11 | SSC Shadow United Benjamin G01 | 3 | SSC Shadow Elite Dobson G00 | 0 | 2014 NWL U14 | 2.96 | 0.84 |
| 2014-09-28 | Moscow United G00 | 2 | SSC Shadow United Benjamin G01 | 2 | 2014 NWL U14 | 1.78 | 0.53 |
| 2014-09-27 | SSC Shadow United Benjamin G01 | 1 | SSC Shadow Elite Bellefeuille G01 | 2 | 2014 NWL U14 | 1.07 | 1.60 |
| 2014-09-20 | Lakeland Nighthawks Lowe G00 | 2 | SSC Shadow United Benjamin G01 | 3 | 2014 NWL U14 | 1.68 | 2.12 |
| 2014-09-20 | Idaho Thunder G00 | 5 | SSC Shadow United Benjamin G01 | 1 | 2014 NWL U14 | 2.01 | 0.88 |
| 2014-09-13 | SSC Shadow United Benjamin G01 | 5 | CDA Sting Tigres G00 | 0 | 2014 NWL U14 | 1.87 | 1.06 |
| 2014-09-07 | SSC Shadow United Benjamin G01 | 1 | FC Spokane Black 2 G01 | 0 | 2014 Pend Oreille Cup GU13 Gold | 0.74 | 1.04 |
| 2014-09-06 | SSC Shadow United Benjamin G01 | 1 | Missoula Strikers G01 | 0 | 2014 Pend Oreille Cup GU13 Gold | 2.30 | 0.32 |
| 2014-09-06 | Spokane Foxes Premier G02 | 2 | SSC Shadow United Benjamin G01 | 3 | 2014 Pend Oreille Cup GU13 Gold | 1.75 | 0.69 |
| 2014-08-10 | SSC Shadow A G01 | 8 | SSC Shadow United Benjamin G01 | 0 | 2014 Les Schwab NW Cup U13 Gold / Silver | 6.89 | 0.25 |
| 2014-08-09 | SSC Shadow B G01 | 0 | SSC Shadow United Benjamin G01 | 2 | 2014 Les Schwab NW Cup U13 Gold / Silver | 0.86 | 1.90 |
| 2014-08-09 | Breakers Andersson G01 | 0 | SSC Shadow United Benjamin G01 | 0 | 2014 Les Schwab NW Cup U13 Gold / Silver | 1.35 | 1.92 |
| 2014-08-08 | Three Rivers SC Black District G01 | 0 | SSC Shadow United Benjamin G01 | 6 | 2014 Les Schwab NW Cup U13 Gold / Silver | 0.84 | 2.82 |
| 2014-06-15 | Spokane Foxes Emerald G01 | 0 | SSC Shadow United Benjamin G01 | 1 | 2014 Olivia Chaffin GU13 | 1.07 | 1.58 |
| 2014-06-14 | SSC Shadow United Benjamin G01 | 2 | FC Spokane Black 2 G01 | 0 | 2014 Olivia Chaffin GU13 | 0.74 | 1.04 |
| 2014-06-14 | Spokane Foxes Red G01 | 0 | SSC Shadow United Benjamin G01 | 5 | 2014 Olivia Chaffin GU13 | 0.25 | 4.64 |
| 2014-06-13 | Sabers Delpizzo G01 | 0 | SSC Shadow United Benjamin G01 | 2 | 2014 Olivia Chaffin GU13 | 0.42 | 3.78 |